

Flat 49 Steel House, The Metalworks Petersfield Avenue, Slough, SL2 5AE
£1,700 Per month
Council Tax Band: C

H&H
BESPOKE



Welcome to Steel House, a modern apartment located in the desirable area of The Metalworks on Petersfield Avenue, Slough. This contemporary residence, built in 2020, offers a perfect blend of style and comfort, making it an ideal choice for those seeking a new home.

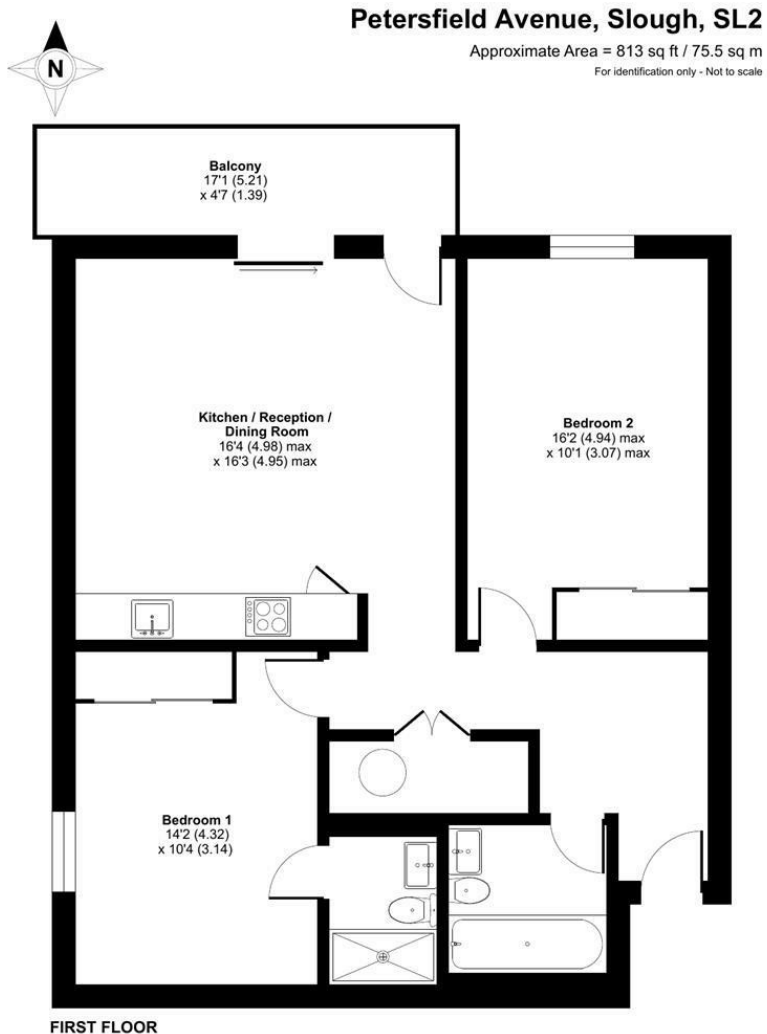
The apartment features a spacious reception room, providing a welcoming space for relaxation and entertaining guests. With two well-appointed bedrooms, this property is perfect for small families, couples, or individuals who desire extra space for a home office or guest room. The two bathrooms add convenience and privacy, ensuring that morning routines run smoothly.

Steel House is designed with modern living in mind, boasting high-quality finishes and contemporary fixtures throughout. The open-plan layout enhances the sense of space and light, creating an inviting atmosphere. Residents will appreciate the proximity to local amenities, including shops, parks, and excellent transport links, making commuting and daily errands a breeze.

This apartment is not just a place to live; it is a lifestyle choice that offers comfort, convenience, and a sense of community. Whether you are looking to buy or rent, Steel House presents a fantastic opportunity to secure a modern home in a thriving area. Do not miss the chance to make this exceptional property your own.



13 Sherrard Street, Melton Mowbray, Leicestershire, LE13 1XH
 0333 242 3760
 Beth@houseandhomebespoke.co.uk



Floor plan produced in accordance with RICS Property Measurement 2nd Edition, Incorporating International Property Measurement Standards (IPMS2 Residential). © ritchecom 2026. Produced for House and Home Bespoke. REF: 1426794

Energy Efficiency Rating		Current	Potential
Very energy efficient - lower running costs			
(92 plus) A			
(81-91) B		84	84
(69-80) C			
(55-68) D			
(39-54) E			
(21-38) F			
(1-20) G			
Not energy efficient - higher running costs			
England & Wales		EU Directive 2002/91/EC	